



# TABLE OF CONTENTS

Letter from Leadership	3
Artistic Directors	4
Season at a Glance	5
2023-2024 Season	6–9
Company Artists	10–11
Studio Company Dancers	12–13
Community Engagement	14–15
The Louisville Ballet School	16–17
Community Healing Garden	18–19
Financial Report	20
Philanthropic Support	21–26
Board + Advisory Leadership	27

Cover image:  
Natalia Ashikhmina and Mark Krieger in *Giselle*.  
Photo by Josh Mauser.

Page 2 image:  
Caitlin Kowalski in *Giselle*.  
Photo by Andrew Kung, 2023.



## A LETTER FROM THE CEO + BOARD PRESIDENT

Dear Friends of Louisville Ballet,

As we reflect on this extraordinary 2023–2024 Season, we are filled with gratitude for your passion, generosity, and unwavering support. Thanks to you, we’ve made incredible strides across all aspects of our organization.

Our artistic excellence has shone through over 50 performances, including timeless classics and innovative new works. With 23 Company Artists and 40 Studio Company dancers, guided by the vision of our new artistic directors, Harald Uwe Kern and Mikelle Bruzina, we’ve delighted audiences and forged lasting connections.

Your support has fueled significant growth in patron attendance, exceeding our budget by 38%, and achieving record charitable donations. The Brown-Forman Nutcracker broke all previous attendance records, allowing us to welcome even more patrons into our ballet family.

Our commitment to education and community engagement has been equally inspiring. This year, we proudly served a record 899 students at The Louisville Ballet School, with students traveling from 27 states to participate in the Louisville Ballet Summer Intensive program.

Additionally, nearly 22,000 individuals were reached through our Community Engagement programs, reinforcing our commitment to sharing the joy of dance and providing access to all including under-resourced and medically fragile children and adults.

As Kentucky’s official state ballet, we are committed to providing access to the arts throughout the state. We have worked

diligently to ensure our performances and educational initiatives reach diverse audiences in Kentucky and southern Indiana, expanding access and opportunities for everyone.

This year has also brought transformative changes—new leadership, vision, and passion—that will undoubtedly elevate Louisville Ballet to new heights. We are proud to share the results of this season with you.

You will see in the financial reporting section of the annual report that we boasted a \$677K surplus this year, providing a strong foundation for our ongoing recovery and growth.

Thanks to your support, we’ve made a significant impact not only in the lives of our students and audiences but also in the wider community. Your contributions empower us to create, inspire, and share the magic of dance with even more people.

We urge you to continue to invest in our mission through dependable, sustainable giving. Together, we can elevate our efforts and reach new heights, bringing the joy of dance to countless individuals. Your commitment is essential to our success!

Thank you for your continued belief in the power of dance, and for being an essential part of our story. We look forward to dancing with you through another remarkable year.

With deep gratitude,

	
Leslie Smart, CFRE CEO	Ralph de Chabert Board President





## ARTISTIC DIRECTORS

The 2023-2024 Season marked a significant milestone as Mikelle Bruzina and Harald Uwe Kern were appointed as Louisville Ballet’s new Artistic Directors, bringing with them decades of institutional knowledge and a unique appreciation for the company.

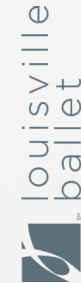
As the company embarked on discussions for new artistic leadership, former Artistic Director Bruce Simpson and former Associate Artistic Director Helen Starr emphasized the value of generational and institutional wisdom within Louisville Ballet, which Bruzina and Kern carry after many seasons with the company.

Mikelle Bruzina is a native of Lexington, Kentucky, and a graduate of the Royal Winnipeg Ballet School, Professional Division. She has been a part of Louisville Ballet for a span of 28 years. Mikelle joined in 1995 as a member of the Corps de Ballet under the Direction of Alun Jones and during the tenure of Bruce Simpson, she worked her way up to principal dancer in 2004 and since 2010 has taken on the role of Senior Ballet Mistress for Louisville Ballet upon her retirement from the stage. The extensive range of roles as principal dancer gives her a breadth of knowledge in teaching, coaching, staging, and rehearsing the company’s extensive repertoire. In addition, Mikelle has been the director of the Louisville Ballet’s training program as Co-Associate Artistic Director of The Louisville Ballet Studio Company. As a choreographer, Bruzina has created several world premieres commissioned by and for Louisville Ballet including *Gloria* (1999) and *Sansei* (2009), which received the prestigious Choo-San Goh Choreography Award and was a world premiere in 2012.

Harald Uwe Kern was invited in 2005 to join Louisville Ballet, by then Artistic Director Bruce Simpson as the company’s Ballet Master and was promoted in 2009 to Senior Ballet Master. Kern studied at the Ballet School of the Vienna State Opera and the Academie de le Danse de Princess Grace in Monte Carlo. He performed as a soloist and principal dancer with the Vienna State Opera Ballet, Basel Ballet, the Joffrey Ballet, Ballet Internationale, Charleston Ballet Theater, and the Channel Island Ballet, where he also served as Associate Artistic Director. He has toured throughout the world and received many accolades, including the Rudolf Nureyev Scholarship Award, the Paris International Dance Competition – prix d’interpretation, and an Award for Artistic Achievement from the New York International Ballet Competition. Over the last 18 seasons with Louisville Ballet, Kentucky audiences enjoyed his stagings and choreography as well as his stagecraft as a performer.



## 2023–2024 SEASON AT A GLANCE



**59,597**  
Total individuals served

**43,705**  
Audience members

**52**  
Public performances

**23**  
Company artists

**\$5.09M**  
Operating expenses

**\$3.03M**  
Contributed income

**\$1.43M**  
Ticket revenue



**899**  
Students enrolled

**63**  
Zip Codes served

**39**  
Studio Company Dancers on full scholarship

**\$677K**  
Awarded in scholarships\*

**3 mos–76 yrs**  
Age range of enrolled students

*\*includes Studio Company*



**21,736**  
Total participants\*

**599**  
Classes taught

**32**  
In-school and community performances

**2,280**  
Students from Title 1 schools attended free school matinee performances

**60**  
Unique zip codes served

**179**  
Unique locations served

*\*Includes matinee school performances*





louisville ballet



# SEASON OF THE COMMONWEALTH

— *Made for Kentucky, by Kentucky* —

LOUISVILLE BALLET  
STUDIOS

OCTOBER  
13-15, 2023



## DISTILLED

THE FINEST OF DANCE  
DISTILLED IN KENTUCKY

THE BROWN  
THEATRE

NOVEMBER  
10-12, 2023



## GISELLE

A HAUNTING TALE OF LOVE AND BETRAYAL

THE KENTUCKY  
CENTER,  
WHITNEY HALL

DECEMBER  
8-24, 2023



## THE BROWN-FORMAN NUTCRACKER

Choreography by Val Caniparoli

THE SWEETEST HOLIDAY TRADITION IN KENTUCKY

LOUISVILLE BALLET  
STUDIOS

JANUARY  
25-28, 2024  
FEBRUARY  
2-4, 2024



## #CHORSHOW

CHOREOGRAPHERS' SHOWCASE

DANCE - UP CLOSE AND PERSONAL

THE KENTUCKY  
CENTER,  
WHITNEY HALL

MARCH  
1-2, 2024



## ROMEO & JULIET

PASSION. TRAGEDY.  
THE ORIGINAL STAR-CROSSED LOVERS.

7





Natalia Ashikhmina gives her farewell performance after 18 years at Louisville Ballet with Mark Krieger in Alun Jones' *Romeo & Juliet*. Photo by Kateryna Sellers.




Artists of Louisville Ballet in *Giselle*. Photo by Kateryna Sellers.



Sarah Bradley as The Rose in *The Brown-Forman Nutcracker*, choreography by Val Caniparoli. Photo by Kateryna Sellers.

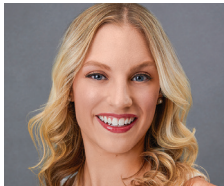


Ashley Thursby in *Raymonda*. Photo by Kateryna Sellers.

<b>DISTILLED</b>	<b>443</b> ATTENDEES
<b>GISELLE</b>	<b>2,128</b> ATTENDEES
THE  BROWN-FORMAN <b>NUTCRACKER</b> <small>Choreography by Val Caniparoli</small>	<b>18,266</b> ATTENDEES
<b>#CHORSHOW</b>	<b>830</b> ATTENDEES
<b>ROMEO &amp; JULIET</b>	<b>3,515</b> ATTENDEES



COMPANY  
ARTISTS



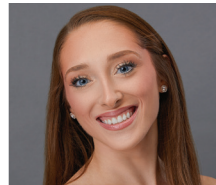
**ELIZABETH ABBICK**  
Joined Company: 2022  
Hometown: Overland Park, KS



**LEXA DANIELS**  
Joined Company: 2016  
Hometown: Stoneham, MA



**LEIGH ANNE ALBRECHTA**  
Joined Company: 2009  
Hometown: Fremont, OH



**ANNA FORD\***  
Joined Company: 2023  
Hometown: Lilburn, GA



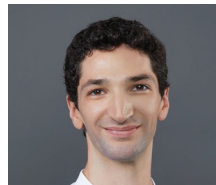
**NATALIA ASHIKHMINA**  
Joined Company: 2006  
Hometown: Bratsk, Russia



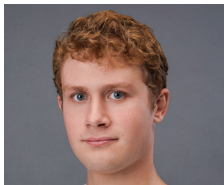
**KHALIL JACKSON\***  
Joined Company: 2023  
Hometown: Dallas, GA



**SARAH BRADLEY**  
Joined Company: 2022  
Hometown: Cincinnati, OH



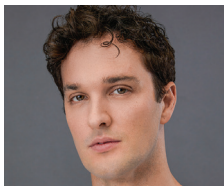
**ALEXANDER KINGMA\***  
Joined Company: 2023  
Hometown: Lafayette, IN



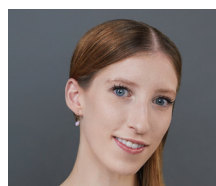
**CHRISTIAN CHESTER\***  
Joined Company: 2023  
Hometown: Sunbury, OH



**CAITLIN KOWALSKI**  
Joined Company: 2021  
Hometown: Radcliff, KY



**MARK KRIEGER**  
Joined Company: 2012  
Hometown: Alexandria, VA



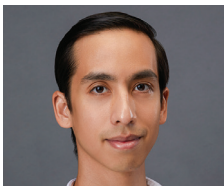
**ELEANOR PRINCE\***  
Joined Company: 2023  
Hometown: Louisville, KY



**ADDISON MATHES\***  
Joined Company: 2023  
Hometown: Corydon, IN



**STEPHEN MYERS\***  
Joined Company: 2023  
Hometown: Chesterfield, VA



**MINH-TUAN NGUYEN**  
Joined Company: 2018  
Hometown: Cupertino, CA



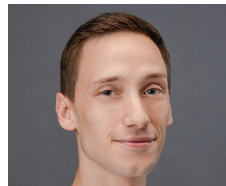
**JORDAN NOBLETT\***  
Joined Company: 2023  
Hometown: Gastonia, NC



**ASHLEY THURSBY**  
Joined Company: 2008  
Hometown: Richmond, MO



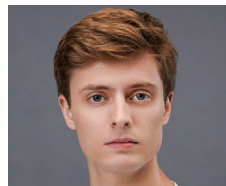
**AMBER WICKEY**  
Joined Company: 2022  
Hometown: Tenafly, NJ



**ALEKSANDR SCHROEDER**  
Joined Company: 2019  
Hometown: Anderson, IN



**DANIEL SCOFIELD**  
Joined Company: 2022  
Hometown: Louisville, KY



**DAVID SENTI**  
Joined Company: 2021  
Hometown: Holland, MI



**SHELBY SHENKMAN**  
Joined Company: 2016  
Hometown: Boca Raton, FL



**BRIENNE WILTSIE**  
Joined Company: 2018  
Hometown: Pittsburgh, PA



**PHILLIP VELINOV**  
Joined Company: 2006  
Hometown: Sofia, Bulgaria

\* new company artist





Louisville Ballet Studio Company is a four-year, tuition-free program designed to provide professional-caliber training in technique and artistry in preparation for a professional career in classical ballet and versatility in various derivative styles. The program is a post-secondary extension of the Pre-Professional Program at The Louisville Ballet School and its emerging artists are truly the bridge between the School and Company.

### LEVELS 9-10

From left to right, back row (Level 10):  
Tarique Logan, Ruthanna Dalby,  
Claire Schoellerman, Gabrielle Savka,  
Samantha Schuermann, Claire Churchill,  
McKenna Hoek.

Front row (Level 9):  
Mackenzie Wandel, Elizabeth Hines,  
Shayda Honda, Hope Farrar, Paige Riffer,  
Chloe Puffer, Adrah Cook, Ezra Paisley



### LEVELS 7-8

From left to right, back row (Level 8):  
Ella Feleay, Ida Soranno, Caleb Emory,  
Danika McNees, Gaven Stevens,  
Ava Ownby, Sameer Rhodes,  
Emmaline Fontanilla, Victoria Saboura.

Middle row (Level 7):  
Sarah Hutchison, Jessica Bealer, Natalie Schreiner,  
Marissa Soluri, Andrey Obolonchik, Emi Makimura,  
Gwyneth Holliday, Abby Burnette, Kirsten Smerud (standing).

Front row (Level 7):  
Brad Delaney, Ava Dhira Metzger, Abigail Wyrrick,  
Guinevere Nelson, Desmond Atrostic





# COMMUNITY ENGAGEMENT

Louisville Ballet provides community engagement programming through a wide range of in-school residencies, performance assemblies, before/after-school programs, student matinees, adaptive dance partnerships, community workshops, audience engagement initiatives, scholarship opportunities, and virtual programming. We strive to reach the widest possible audience through our programs to ensure access and inclusion while building diversity in the world of ballet.

## BALLET BOUND

Ballet Bound provides young dancers from across Greater Louisville the opportunity to study classical ballet free of charge in a professional setting. Ballet Bound is designed to build diversity in the world of ballet while serving as a pathway for dancers to The Louisville Ballet School, the Louisville Ballet Studio Company, and eventually a career with Louisville Ballet. Currently, 17 Ballet Bound graduates are on a full scholarship at The Louisville Ballet School.

## MOVING STORIES

Moving Stories is an assembly style in-school performance featuring dancers from The Louisville Ballet Studio Company. The program includes a ballet class demonstration, a short story ballet, and students are able to join the dancers on stage. Educators receive an in-depth on-line study guide to enhance the experience for students in the classroom. In April of 2024, 31 performances took place across four counties, reaching nearly 7,000 students.

## STUDENT MATINEES

Student matinees are designed to give students and educators a behind-the-scenes look at Louisville Ballet through an interactive performance and access to an online study guide. Three sold out student matinee performances of *The Brown-Forman Nutcracker* reached nearly 6,000 students. The Bridge the Gap program made it possible for 2,280 students from Title 1 schools to attend for free.

## IN-SCHOOL RESIDENCIES

Louisville Ballet provides both before and after school dance programs to local schools and community centers during the school year. Participants are engaged in a creative learning environment while exploring ballet basics and other dance styles. Participants have opportunities to perform and attend Louisville Ballet performances at no cost. The 2023–2024 school year included programming at six schools and two community centers.

## ADAPTIVE DANCE

Louisville Ballet believes in the power of dance and strives to make the art form accessible to all through our Adaptive Dance Programs. Organizations served in 2023–2024 include Heuser Hearing and Language Academy, Visually Impaired Preschool Services, Down Syndrome of Louisville, Dreams with Wings, Summit Academy and FEAT of Louisville. Participants are immersed in movement residencies and have opportunities to attend performances.

## SENSORY FRIENDLY

The Sensory Friendly performance of *The Brown-Forman Nutcracker* allows everyone to experience this magical holiday tradition in a specially designed atmosphere that is comfortable, inclusive, and safe for individuals who have sensory sensitivities. Participants receive access to social narratives, tactile to-go bags and have the opportunity to meet dancers in the lobby before the show. Over 500 patrons attended the performance in December 2023.



## PARTICIPANT DEMOGRAPHICS

65%

from Under-Resourced Communities

15%

Individuals with Disabilities

13%

Students with English as Second Language

21,736 Individuals Served

599 Classes Taught

113 Schools Participated

60 Unique Zip Codes

32 In-School & Community Performances

17 Ballet Bound Continuing Scholarships

12 Library Events

7 Park Audition Workshops





Studio Company Dancer  
Samantha Schuermann  
performing in The Louisville Ballet  
School's Spring Dance Festival.  
Photo by Kateryna Sellers.

# THE LOUISVILLE BALLET SCHOOL

The 2023-2024 school year was a notable one for The Louisville Ballet School. Christy Corbitt Krieger was promoted to Director of The Louisville Ballet School and remains the Co-Associate Artistic Director of the Studio Company. Amanda Rollins was also promoted to Lower School Principal.

The 2024 Summer Intensive brought in 450 talented students from 27 states. Students received high quality technique and repertoire training from Louisville Ballet faculty and guest instructors Lauren Anderson and Brandon Ragland. Lauren Anderson is a former principal dancer for Houston Ballet and currently the Associate Director of Education and Community Engagement at Houston Ballet. Brandon Ragland is a former Louisville Ballet Company Artist and is currently Artistic Director of Dayton Ballet.

The annual Spring Dance Festival highlighted movers from the Boost program all the way up to the mind.body.balance. Adult Dance + Fitness program, culminating in the Studio Company's season finale and graduation performance.



Studio Company Dancer McKenna Hoek  
performing in The Louisville Ballet School's  
Spring Dance Festival.  
Photo by Kateryna Sellers.

899	Students enrolled in classes
3 MOS-76 YRS	Age range of enrolled students
\$677,000	Awarded in scholarships
25%	of scholarshipawardees identify as male
40%	Average scholarship value
39	Studio Company Dancers



Studio Company Dancers  
performing *In Search*,  
choreographed by David Senti.  
Photo by Kateryna Sellers.



Studio Company Dancers in  
Act II *Don Quixote*.  
Photo by Kateryna Sellers.





Archbishop Shelton J. Fabre guiding community leaders, community members and Louisville Ballet dancers and staff in prayer at the dedication of the Community Healing Garden. Photo by Kateryna Sellers.



Artists of the Louisville Ballet pose with Jon Carloftis in front of the Gallopaloosa Horse "The Roses", designed and painted by Andy Perez, during the dedication of the Community Healing Garden. Photo by Kateryna Sellers.

## COMMUNITY HEALING GARDEN

On May 9, 2023 Louisville Ballet unveiled the Community Healing Garden in the company of Governor Andy Beshear, Mayor Craig Greenberg, and community members. Designed as a space for reflection, connection, and healing, the garden commemorates the fatal events of April 10, 2023 at the Old National Bank in Preston Pointe.

The dedication ceremony included musical performances by Teddy Abrams and Gareth Jones, a prayer led by Archbishop Shelton J. Fabre, and a ribbon cutting with families of the shooting's victims at the heart of the garden.

"Our lives were forever changed by an unthinkable act of violence in Louisville that shook me, this community, and the commonwealth to our core," said Gov. Andy Beshear. "Following times of great loss, we often wonder how we will ever get through it. And the answer is always the same: together. The new Louisville Ballet Healing Garden is a beautiful way for our community to come together and heal. It's a place where we can reflect on what was lost and move forward with love and care for each other."

Greenberg added, "This garden is a sacred space in the perfect spot for reflection and restoration. We owe the Louisville Ballet and their generous partners a debt of gratitude for providing our community with beauty – first on stage and now here."

The garden was designed by Jon Carloftis, an award-winning landscaper and Kentucky native. A centerpiece of the green space is a Gallopaloosa horse inspired by the Waltz of the Flowers from The Brown-Forman Nutcracker, created by Artist Andy Perez and donated by Kentucky Colonel Shannon Ralston through Brightside Foundation.

The Community Healing Garden, located at 315 East Main Street, is open to the public.



Governor Andy Beshear addresses attendees at the dedication of the Louisville Ballet Community Healing Garden. Photo by Kateryna Sellers.

### A HOST OF DONORS, PARTNERS, AND FRIENDS STEPPED FORWARD TO BRING THE IDEA TO LIFE, INCLUDING:

Kentucky Colonel Shannon Ralston

The KFC Foundation

Jon Carloftis, *garden designer*

Andy Perez, *Gallopaloosa artist*

Michelle Black White, *Brightside Foundation*

Realm Construction

Sherwin-Williams

Maggie Harlow, *Signarama*

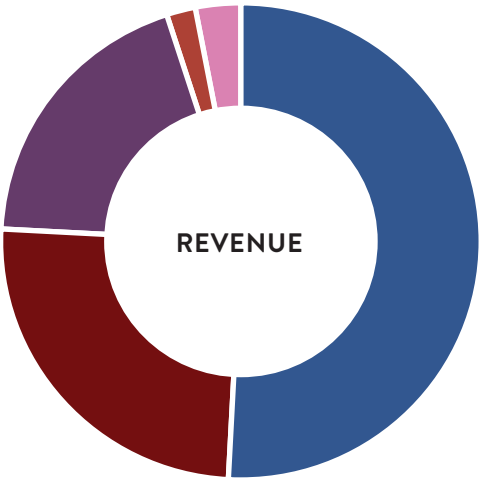


2023-2024 FINANCIAL REPORT

REVENUE

Grants, Contributions & In-Kind	\$3,016,802
Earned Revenue (Performance)	\$1,438,918
Earned Revenue (School)	\$1,102,333
Community Engagement	\$102,435
Other	\$192,344

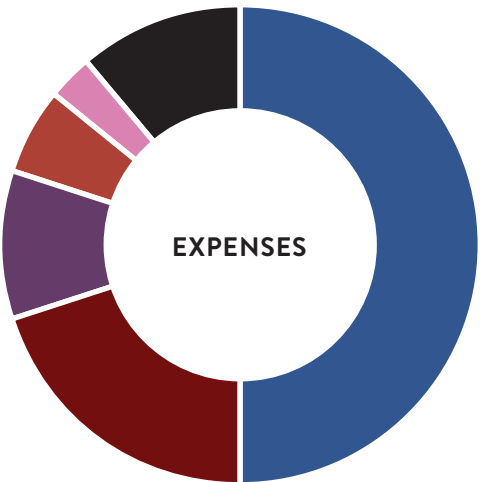
TOTAL \$5,852,832



EXPENSES

Performances	\$2,944,270
School	\$1,160,034
General Admin	\$597,307
Fundraising	\$355,992
Community Engagement	\$174,103

TOTAL \$5,231,707



NET INCOME / SURPLUS \$621,125

CORPORATE + FOUNDATION DONORS







The Starr Society was created to honor and celebrate the achievements of Helen Starr, who is a true gift to the dance world and a legend to Louisville Ballet. Membership is reserved for donors who contribute at least \$10,000\*. We are grateful to the following benefactors who pay tribute to the tradition of excellence she helped establish within our Company.

For more information, please contact  
Regan Nichols, [rnichols@louisvilleballet.org](mailto:rnichols@louisvilleballet.org)

- ANONYMOUS (2)  
PUMPKIN AND THE LATE ROBERT AUERBACH  
J. KEITH AUERBACH  
BROOKE BROWN BARZUN  
AND MATTHEW BARZUN  
EDITH BINGHAM  
NINA BONNIE  
HANS AND THE LATE KATHY BRUEHL  
JANET DENUYL  
MARY MOSS GREENEBAUM  
MATTHEW AND LENA HAMEL  
JIM AND SARA HAYNES  
AUGUSTA BROWN HOLLAND  
AND GILL HOLLAND, JR.  
PETER ASHBY HOWARD AND JODY HOWARD  
THE LATE MICHAEL C. JORDAN  
ALAN AND SHELLY KAMEI  
BETH AND RICHARD KLEIN  
NANA LAMPTON  
LISA LEET  
THE LATE DR. JAMES B.  
AND MRS. HELEN K. LONGLEY  
BRUCE MERRICK AND KAREN MCCOY  
JENNIFER A. MOORE  
WARWICK MUSSON  
ALLISON AND TOM O’GRADY  
ONA OWEN  
SHARON AND HENRY POTTER  
CAROL C. PYE  
SHANNON RALSTON  
DR. ALAN ROTH  
ELLEN AND MAX SHAPIRA  
JULIE AND CHRIS SOLURI  
PAMELA AND PAUL THOMPSON  
THE LATE MARY ROSE TOEBBE  
JAMES AND ELIZABETH VOYLES  
JIM AND MARIANNE WELCH  
MARTHA AND KENNETH WERTZ  
BUCK AND JOSIE WISEMAN  
GRACE WOODING

INDIVIDUAL CONTRIBUTORS

ARABESQUE SOCIETY

The Arabesque Society is a group of dedicated benefactors who have made arrangements in their estate plans to support Louisville Ballet in the future. For more information on how to include Louisville Ballet in your estate plans, please contact Regan Nichols, [rnichols@louisvilleballet.org](mailto:rnichols@louisvilleballet.org).

- ANONYMOUS (3)  
LEE PURCELL BEST  
THE LATE ELAINE BORNSTEIN  
JAMIE JARBOE AND  
DOUGLAS BUTLER  
WALTER CLARE  
JOHN CUMMINS  
SUSAN GRUBBS  
THE LATE MICHAEL C. JORDAN  
THE LATE DR. JAMES B. AND  
MRS. HELEN K. LONGLEY  
THE LATE BETTY AND  
DAVID MILLS  
MARTHA NICHOLS  
D. PATTON PELFREY  
RON RUBIN  
LESLIE AND JOHN SMART  
JOHN STOUGH  
THE LATE MARY ROSE TOEBBE  
JIM AND LIBBY VOYLES

THE BRUCE  
SIMPSON FUND

The Bruce Simpson Fund or the Fund for Louisville Ballet Artists provides annual income to support dancer salaries. For more information, please contact  
502.583.3150 ext. 238 or Regan Nichols, [rnichols@louisvilleballet.org](mailto:rnichols@louisvilleballet.org).

DANCER \$5,000 +

- RALPH AND TAMMY DE CHABERT  
FRANCES DUMBAUGH  
SHIRLEY DUMESNIL  
SHERRY M. AND JOSEPH FELDPAUSCH  
RYAN BURKE AND ROSANNA GABRIELE  
PAULA AND FRANK HARSHAW  
MALLORY HOWELL  
ALFRED AND ANNE JOSEPH  
LEE AND ROSEMARY KIRKWOOD  
JAMES PITT  
HELEN STARR  
BILL AND MARY STRENCH  
KENJI AND KAORI TASHIRO  
CARL AND ELLEN THOMAS  
JANE WELCH  
DONALD G. WENZEL JR  
AND RONALD L. DARNELL  
CHERI AND JIM WHELAN  
MAIDA WOOD

ARTIST \$2,500–\$4,999

- CATHY AND IRVING BAILEY  
DR. KIMBERLY BOLAND  
WALTER CLARE  
CAROLLE JONES CLAY AND KENNETH CLAY  
DAVID AND SONYA COOK  
LEE DORSEY  
LINDA AND WILLIAM ELLISON  
CHERYL AND EUGENE GILCHRIST  
SUSAN AND WILLIAM GRUBBS  
DR. MARY HARTY AND MR. JAMES HARTY  
JOHN SELENT  
LESLIE AND JOHN SMART  
KENNEY AND CATHY SNELL  
JOAN WHITTENBERG

POINTE \$1,500–\$2,499

- JOE AND SUE ALBRECHTA  
GWEN ANDERSON  
DAVID ATROSTIC  
PATRICIA W. BALLARD  
MIRIAM BALLERT  
MEREDITH BROWN  
MACHIKO BRUZINA  
HOLLY BROCKMAN-JOHNSON  
AND STEVEN FICK  
SANDAL H. GULICK  
CAROL HARPER  
CAREY PILO  
MARSHALL AND TERRIE Z. SELLERS

- JAMIE AND ALISON SEWARD  
ALI AND TYLER SHARPE  
AVANI SINGAL  
MARY STITES

DANCER  
\$1,000–\$1,499

- ANN TAYLOR ALLEN  
MICHAEL G. ALT  
RICHARD AND PATRICIA ARRINGTON  
KATHLEEN BERGER  
MARY BINGHAM  
ALAN AND SANDRA BRYANT  
MARIA CILIBERTI  
ROBERT COX  
BONNIE CRESS  
CHARLES AND JANET DANNAHER  
DR. JANE DONOVAN AND DR. WALTER DONOVAN  
MARCIA DORMAN  
REV. JOHN G. EIFLER  
SUSAN E. ELLISON  
TURNERY BERRY AND KENDRA FOSTER  
MS. PEGGY FOWLER  
CHERYL AND LARRY HUGHETT  
MR. & MRS. JUNIUS W. PRINCE III  
JAMES R. TOMPKINS III  
ALBIN B. HAYES, JR.  
MELISSA HINCHA-OWNBY AND DAVID OWNBY JR.  
CHRISTOPHER AND ALICIA KRIEG  
DR. THOMAS LOEB  
FAIRLEIGH AND ABBY LUSSKY  
ZACH WAYNE MCCLAVE  
JOHN MCCLENDON  
DR. ROR MECKLER AND MRS. LYNN MECKLER  
R. CHARLES AND SALLY MOYER  
MARTHA NICHOLS  
MARY AND TED NIXON  
LUE AND JOHN PEABODY  
DONNA MOSER PEAK  
D. PATTON PELFREY  
SHARON P. PFISTER  
JAHREE AND BYRON RAGER  
JANET W. RINK  
KATHRYN SHAVER  
ALYNN AND ANDREW SHERMAN  
KAREN AND FARRELL SMITH  
LOUISE JUSTICE PASS AND DAVID C. SUMMERS  
MARGARET THOMAS  
REBECCA TERRY AND PETER THOMPSON  
DR. AND MRS. DAVID TUCKER  
ELIZABETH VAUGHAN  
WILLIAM AND ALICE WALSH  
DR. RICHARD WOLF AND MRS. MARY WOLF



**BENEFACTOR**  
**\$500-\$999**

ANONYMOUS  
LEE PURCELL BEST  
SUSAN BRASCH  
DEBRHA BROCK  
LYLE BROWNE  
BRAD CALOBRACE AND  
RICARDO CALOBRACE  
ELEANORE CARTER  
JULIE AND WILLIAM  
CHURCHILL

LARRY T. SLOAN AND  
HELEN K. COHEN  
LINDA AND FREDERIC  
COWAN

DR. TRACY K'MEYER AND  
GLENN CROTHERS

ROBERT AND KATHLEEN  
DANIELS

DON DAUB

LAURIE DUESING

TRACI AND JOHN  
EIKENBERRY

MOIRA C. FIEDLER  
LESLIE AND GREGG  
FOWLER

RONALD GREGG

KATHY AND NOEL HALL

ANNE AND MIKE HAMPTON

MARY AND THOMAS  
HARDIN

SAMUEL F. HODGES  
KIMBERLY HUTCHISON

RICHARD JOHNSON

JESSI JONES

SUSAN HAMILTON AND ED  
KREBS

STANLEY AND SALLY  
MACDONALD

HIDEO AND MARYSOL  
MAKIMURA

CAROL BARR MATTON  
DAVID LIPP AND LAURA  
METZGER

GUY AND ELIZABETH  
MONTGOMERY

ASHLEY AND ANDREW  
NOLAND

EBONIE PITTMAN

LUKE POWELL

COURTNEY SMOCK AND  
DAVID ROWLAND

ELLEN AND MARK SITES

KATE AND LEE TUCKER

LINDA AND CHRISTOPHER  
VALENTINE

CAROL AND EDDIE VETTER  
LARRY WANDELL  
JOHN AND INEZ WHITE  
SKIP WHITE  
DONALD WHITFIELD  
NICHOLAS WILKERSON  
MARY AND ORME WILSON  
DENISE WILSON  
DR. WAYNE VILLANUEVA  
AND MS. JANET WITZLEBEN  
ANN ZIMMERMAN

**PATRON**  
**UP TO \$499**

ANONYMOUS (4)  
JENNIFER AAM  
JOSHUA ABELL  
SARAH ACLAND  
MCCAULEY ADAMS  
MARIAN ADELL  
CHERYL L. AKRIDGE  
KATHERINE ALAKS  
JOHN DOWNARD AND MARY  
ALEXANDER  
DANNY ALEXANDER  
STARR PETERS AND JESSE ALFORD  
MARGUERITE ALLEN  
PENNY VON ALLMEN  
PATTY ANDERSON  
LUIS ANDRADE  
TODD AND JENNIFER ANTZ  
KELLI ARCHER  
PHILIP VELINOV AND NATALIA  
ASHIKHMINA  
EMMAROSE ATWOOD  
ISOLDE AUBUCHON  
ERIN AND JOE AVDEVICH  
KATHERINE NICHOLAS AND WADE  
BAILEY  
KATHLEEN BAILEY  
COURTNEY BAIRD  
DANIELLA BALLESTES  
GERALDENE BANNISTER  
JOE BARGIONE  
LYNNE BARON  
ARIANE BARRIE-STERN  
BEVERLY BARRINGER  
MIKE AND JUDY BEACH  
ALMA BENEDICT  
MICHAEL BENNETT  
JEFFREY M. BERNHARDT  
DEBBIE BERRY  
AYRICA BISHOP  
JENNIFER BLAIR  
NATHAN BLAND  
ANNE BLAYNEY  
RANDY BLEVINS  
RINA BLOCH  
EMILY BOARD  
ADA AND KENNETH BOATRIGHT  
VICTORIA BOGGS

ANDREW BOLLINGER  
JUNE AND THOMAS BRADY  
LINDA L. BRAUN  
RACHEL BREWER  
JOYCE AND EDWARD BRIDGE  
DORIS BRIDGEMAN  
JACQUELINE BRILL  
KATHRYN AND PAUL BROTZGE  
ELLEN T. BROWN  
KEVIN BROWN  
NANCY BUECHLER  
RHONDA BURKS  
DR. CRUMP BAKER AND DR. ALTA  
BURNETT  
COURTNEY BURNETT  
DAVID BURTON  
BETH BUSSELL  
RONALD AND ELIZABETH BUTLER  
JAMIE JARBOE AND DOUGLAS  
BUTLER  
RUSSELL BYRD  
JEFFREY CALL  
CHARLES F. CALLIHAN  
MICHAEL CAMPBELL  
EVELYN CANALES  
ELIZABETH CARLSON  
CHRISTINE CARRIGAN  
THOMAS CARSON  
LINDA CARTER  
MICHELLE CARTER  
RALPH AND BETTY CASH  
JOSHUA CASTLEN  
JOHNATHAN CAUDILL  
JEFFREY CAVANAUGH  
MIKE AND SUE CHMILEWSKI  
DR. ELIZABETH CHRISTOFF  
DEANNA CLARK  
DENISE CLAYTON  
TONI CLEM  
CHRISTOPHER COLON  
CAROLE CONCORDS  
SAMANTHA CONSTANTINE  
MARTHA AND GRAHAM COOKE  
GREGORY N. CORBY  
KATHRYN CORNWELL  
ISABEL COROMINAS  
ALLAN AND GRETCHEN COWEN  
PAIGE COX  
ELANA CRANE  
BRIAN CREECH  
VIRGINIA B. CROMER  
BRIAN CRONQUIST  
KRISTEN CRUMPTON  
SHARON AND MARISSA CUNDIFF  
AMY R. CURRIE  
HELEN DAIGLE  
BRENDA DANIELS AND JEFFERSON  
DALBY  
LIESA DALY  
TIM DANIEL  
LEXA DANIELS  
LYDIA DEEGAN  
JOANNA DEJEAN  
PHILIP DELANEY  
AMY DELANEY  
CHRISTINE DENTON  
SHELLEY DEWIG

ANN DOBBS  
PATRICK AND LAUREL DOHENY  
CLARE DOUGHERTY  
MELISSA DRAUT  
REBECCA DUNCAN  
TERESA DUNLAP  
DANIELLE PELFREY DURYEA  
JAMIE EDLIN  
JIM GIBSON AND GLEN ELDER  
MARY A. ELDER  
NICK ELDER  
DR. LEZA ELDORADO  
ASHLEY ERK  
MICHELE ESPINOSA  
PAUL ETHRIDGE  
ERIN AND MITCHELL EVANS  
BETTY EVERSON  
PATRICIA FANTONI  
GAUSS FAMILY  
DEBRA FARMER  
CAROLYN FARTHING  
ANN FAUREST  
FARRAH FERRIELL  
TONY FERRY  
PATIENCE AND ERICA FIELDS  
MATT FIRESTONE  
ANNIE FISK  
LINDA T. FITTS  
MAUREEN FITZGERALD  
JUDGE PAULA FITZGERALD  
MARY BETH FLETCHER  
MRS. KAREN MAGHOUL AND DR.  
MICHAEL FLYNN  
CONNIE FONDONG  
BONNIE FONSECA-GREBER  
ANDREW FORSYTHE  
KRISTEN FRAREY  
CAROLYN FREE  
LEANNE FRENCH  
SUSAN AND TERRY GARDNER  
CINDY GERLACH  
STEVE VON GERLACHTER  
MARGARET GERSTLE  
STEVE GIACOBBE  
ROBERT GIESZL  
ABBIE GILBERT  
GLENN GLASER  
LINDA AND STUART GOLDBERG  
JANE GOLDSTEIN  
JAN GONDER  
RICHARD AND DANEEN GOOD  
KRISTAL GOODMAN  
BENJAMIN GRAFT  
CLAIRE GREENLEE  
TERESA GREER  
JIM AND PAT GREER  
MAGGIE GRIESBECK  
CLAUDIA GRILLO  
BENJAMIN AND MARY GROESCHEN  
ELIZABETH GRUBE  
MARY BETH GULICK  
JOHN AND REBECCA GUTHRIE  
JENNIE HAHN  
ANDREA HALBERT  
MARIE HALEY  
AMY AND ADAM HALEY

BILL AND JUDY HALIDAY  
JULIA K. HALL  
EDWIN HAMBLIN  
MARK HAMMOND  
SARAH AND DONALD HARLAN  
MARCIA LEE HARLOW  
NANCY HARRIS  
HAL HAUCK  
JACQUELINE HAYDEN  
JOSEPH HAYDEN  
ALETHEA HAYES  
CAROL W. HEBEL  
MARTY AND STEVE HEDGEPEETH  
MARY HELFRICH  
INGRID HERNANDEZ  
MARY L. HERRMANN  
JAIME HEUN  
CARA HICKS  
JAMES HILTON  
CASEY HINKLE  
KEVIN HINTON  
KATHY HOGAN  
JUSTIN HOGAN  
AUBREY HOLLE  
ABBIE HOLLIDAY  
AMANDA EGAN AND KELLY  
HOLLINGSWORTH  
TAMY FORD HOLMES  
SHAYDA HONDA  
MARIANNE HOPEWELL  
JOE AND TERRESA HOPKINS  
JILL HOSKINS  
JO NELL HOUSE  
THOMAS HOUSE  
KELLY HUBER  
TRE HUDDLESTON  
JESSICA K. HUFF  
SHERYL HUFFAKER  
JON HUFFMAN  
JUDITH AND BRAD HUGHES  
JODI HUGUES  
LOUIS HUMES  
THOMAS AND DEBORAH ICE  
JAMES INGE AND CATHERINE  
GAGLIO INGE  
BETH JACOBSON  
CAROL JANKOWSKI  
JILL AND FRANKLIN JELSMa  
ALICE JOHNSON  
JOHN JOHNSON  
CHRISTINE AND JOHN JOHNSON  
TIFFANY JOHNSON  
ANTHONY AND MARILYN JOHNSTON  
LELAND JOLGREN  
HUGH JONES  
LUCY JONES  
HELEN STARR JONES  
GEORGE R. WATHEN, JR.  
BENJAMIN MARTINEZ, JR.  
RAMIR ARBOLEDA, JR.  
SANDRA AND HARRY KAHNE  
DONNA KAMAS  
ROBERT KAPFHAMMER  
KELLY KAPP  
ELIZABETH AND RICHARD KAUKAS  
MICHAEL KAVICH

WILLIAM KAVICH  
SANDRA RICHARDSON  
AND DON KEELING  
LAUREN KEHR  
JULIA KENDRICK  
ASHLEY THURSBY KERN  
AND HARALD UWE KERN  
JENNIFER KING  
MONICA KIPER  
DOUGLAS KLOOS  
GAIL KOACH  
BRENDA KOCHER  
MARILYN  
AND PHILLIP KOHL  
DONALD KOLB  
SAMANTHA KOON  
DAWN KOONTZ  
ALAN KOPP  
KAREN KOSHEWA  
DAVID NIEHAUS  
AND ANGELA KOSHEWA  
ED AND ANGELA KOWALSKI  
MAGGIE KOWALSKI  
MARCELLA KRAGEL  
KATHLEEN KRONAUER  
ERIKA KRZTON-PRESSON  
PAUL KUSTES  
LINDA LABBADIA  
BRUCE AND NANCY  
LAFERRE  
CHARLOTTE LAIL  
AMY AND MATT LANDON  
GARY AND AMY LANGSTON  
JORDYN LASHLEY  
RICHARD BADARACCO  
AND JO LAWLESS  
ROBERT LAWLESS  
JOYCE LAWRENCE  
TYLER LAWRENCE  
KATERYNA SELLERS AND  
PETE LAY  
VAN ANH LE  
GERRI LEFFINGWELL  
RONALD LEHOCKY  
STEPHANIE LETSON  
RYLAN LEWIS  
DWAYNE LIKENS  
RUDDY LISHER  
MICHAEL LOSAVIO  
BRUCE AND JUDY LOWE  
DAVID REED AND  
CATHERINE LUCKETT  
JOSEPH LYONS  
CYNTHIA MAHIN  
PAUL MANNING  
CHRISTOPHER MANZO  
JOHN MARTIN  
ELIZABETH MATHES  
LINDA MATTINGLY  
MICHELLE MAXIM  
ROBBYN AND SAMUEL  
MCCLAIN  
EDIE MCCLELLAN  
PATRICIA AND KEVIN  
MCDOWELL  
ALEX MCGHEE  
ELIZABETH MCGINNIS  
JIM MCGOWN  
MAGGIE MCINTYRE

TALLERI MCRAE  
ISABELLE MCRAE  
KENNETH AND PHYLLIS  
MCWILLIAMS  
KELLY MEADWAY  
DR. MELISSA Melford  
EMMA MELO  
BEN VAN METER  
GAIL MICHAEL  
LESLIE S. MIGUEL  
ROBERT AND MARILEE  
MILLER  
DR. SEAN MILLER  
CINDY MILLER  
CAMERON MILLIGAN  
LOREN BINGHAM MILLS  
LISA MINGUS-TULLIS  
CAROLYN MITCHELL  
CECILIA ANN MITCHELL  
ADRIENNE RIGGS  
GUY AND GENEVIEVE  
MONTGOMERY  
MEREDITH MOORE  
JAMIE MORGAN  
SCOTT AND YVETTE  
MORRIS  
JILL MORZILLO  
BETH MUNNICH  
PAT AND ADELE MURPHY  
RANDY MYER  
TAMMIE MYERS  
MARY B. NASH  
PAMELA NATION  
EMILY NEAT  
KAREN AND RAY NETHERY  
MARRTHA NEWMAN  
JENNY NIRMAIER  
DEEDRA NJUGUNA  
DAVID AND TERESA NOE  
DONALD NORMAN  
SHARON NUSS  
THE OBENAUFs  
JOY O'BRYAN  
DAVID O'CONNELL  
EMILY O'DELL  
CHARLES AND SARAH  
O'KOON  
DR. NAOMI OLIPHANT  
KEITH AND KIM OSBORNE  
MARY AND PATRICK  
O'SHEA  
WILL OUSLEY  
JOANNA OVERSTREET  
FATHER TROY OVERTON  
JEANETTE PAWLOWSKI  
MARGARET PEAVY  
DANA PELFRY  
TARA GARDNER PERRY  
THOMAS AND MARY  
PETERS  
JAMES PETERWORTH  
REBECCA AND BRAD  
PHILLIPS  
LEIGH PITTMAN  
DR. NORMAN POINTER  
AND MRS. SUSAN POINTER  
KARA PRICE  
DENNIS PUFFER

ANN RAMSER  
AUDRA RANKIN  
STEPHANIE AND ALEX  
RANQUIST  
ANGELA REA  
BRITNEY REC  
RITA RECKTENWALD  
RACHEL REDDEN  
KATHERINE PETERSON  
AND ROBERT REDMON  
MARY ALICE REESE  
GINGIE REISZ  
NICHOLAS RENN  
SARAH H. RHYNE  
SHELLY RICH  
DARLENE RICH  
KATHERINE BIAGI-RICKERT  
AND TONY RICKERT  
MARY ANN RIDGE  
VERONICA RIGGS  
SANDY RINGER  
AMY RITCHIE  
JULIA ROBERTS  
MIRIAM ROBERTSON  
LYNDA M. ROBERTSON  
MICHELLE RODGERS  
MICHAEL ROHNER  
JESSE ROLLIN  
SUZANNE AND PHILLIP  
RONNINGER  
ANNA ROSALES-CRONE  
SHAHARA ROSS  
BETTY S. ROTHWELL  
CARRIE ROW  
JAVAN ROY-BACHMAN  
ELLEN R. RUDD  
TALLEY RUSSELL  
KARL RUTTAN  
COLLEEN RYAN  
LOUISE SACHS  
VERNON SANDELL  
SARAH AND ROSS  
SANDERSON  
DANIEL AND JUANITA  
SANTOS  
ROBIN SCHALDA  
SULLIVAN  
AMY SCHEINLER  
MARIA SCHERER  
SUSAN SCHILLER  
ZENET SCHISLER  
MELISSA ANN SCHMITT  
SHIRLEY SCHNERINGER  
FRANCES SCHNUERLE  
TINA AND GEOFF  
SCHNUERLE  
SHEILA SCHROEDER  
DONNA SCHUSTER  
SHANNON SCROGGINS  
BRIANNA SEIDT  
ELIZABETH SENN  
LAURA SENTI  
CHARLYNN SHAPIRO  
STELLA AND JAMES  
SHAWGO  
SARI AND MARK  
SHENKMAN  
JASMINE SHEPHERD  
CARY AND CHERI SHIELDS

KATHRYN SIDES  
BARBARA SIGLER  
DR. QUINN SILVERLEAF  
MEL SIMON  
JULIA SIMONS  
DAVID SINCLAIR  
ANDY PERRY AND JOHN  
SISTARENIK  
CHARLES SKAGGS  
MIKE SLATON  
ELIZABETH FITZGIBBONS  
AND DANNY SLATON  
JEFFREY SMITH  
JONATHAN AND  
STEPHANIE SMITH  
DANIEL MOYERS AND  
BARBARA SMITH  
ASHLEY AND NATHAN  
SMITH  
KELLI SMITH  
KIMBERLY SMITH  
EMILY SMITH  
BRENNAN SNEED  
CATHERINE SNYDER  
TOM AND SUE SOBEL  
JAMES AND NAN SPALDING  
LAURA SPAULDING  
LUCY SPICKARD  
NICK GAGLIO, SR.  
TERRY AND EDGAR  
STANTON  
CLARE STARLING  
DR. VICTORIA STATLER  
CURTIS STAUFFER  
ALISON AND BILL STEMLER  
MR. DAVID STIERLE  
KAMA STIGALL  
TED AND JOAN STONE  
JESSICA STONE  
LINDSAY STONE  
LEE AND JOHN STOUGH  
GORDON AND CATHERINE  
STRAUSS  
CADY Q. STRIBLING  
BRIAN STRUNK  
DOUGLAS AND LAURA  
SULLIVAN  
ROSALIE SURTEES  
VINCENT TANAMACHI  
JILL TARVESTAD  
KIM TAYLOR  
RACHEL TERRY  
LEIGH-ANNA TERRY  
AMY TEVLIN  
JACOB THEISEN  
CHRISTOPHER THOMAS  
JOSEPH AND ANN  
THOMPSON  
CAROL K. THOMPSON  
GREG THOMPSON  
DAVID AND DIANE  
THURMOND  
LINDA TILLER  
KELLY TIMPLE  
DR. ASHLEY KING TINSLEY  
LACEY TRAUTWEIN  
GWATHMEY AND GINNY  
TYLER  
DENISHA VAUGHN

ELLEN VENHOFF  
JANE VETRHUS  
INTA K. VOIGHT  
JEANNE VUTURO  
MELANIE WACHSMAN  
HAROLD WAINWRIGHT  
KALYNN WALLS  
ROSS AND KANDICE  
WALTON  
NICOLE WALTON  
TAMMI WALTS  
BRANDT WAMSLEY  
SHANNA WARD  
SUZANNE M. WARNER  
NILES WELCH AND ANN  
WATERMAN  
DAVID WEAVER  
MARK AND JUDITH  
WEBSTER  
MERLETA WEISERT  
AMY WELLS  
MARY JO WETZEL  
LEON WHEELER  
KAY WHELAN  
MICHELLE BLACK WHITE  
JAMES AND CAROLE  
WHITLEDGE  
BETSY WHITTEMORE  
BRIGID WICKSON  
SUSAN WILBURN  
JANELLE WILHELM  
KAY WILKINSON  
MARY BETH WILLIAMS  
NICOLE WILLIAMS  
BRADLEY AND BETH  
WILLIAMSON  
LANCE WILLIAMSON  
LAUREL WILSON  
NANCY AND THOMAS  
WOODCOCK  
ANNE AND EDWARD  
WUNSCH  
CHRISTINE WYRRICK  
KENNETH AND MICHELLE  
YEARGAN  
JUDITH AND JOHN  
YOUNGBLOOD  
GAIL ZEH  
JULIE ZOELLER

**IN-KIND**

ADAM LAWSON

ASHLEY ROUNTREE AND ASSOCIATES

ASIA INSTITUTE CRANE HOUSE

BRIGHTSIDE FOUNDATION INC.

CERITY PARTNERS

DENTONS BINGHAM GREENEBAUM

DOE ANDERSON

ERIC ALLGEIER

EUROTARD DANCEWEAR

FEAT OF LOUISVILLE

FLEUR DE LIS COMMUNICATIONS

HEAVEN HILL BRANDS

HEINE BROTHERS COFFEE

HIGHLAND CLEANERS, OFFICIAL DRY  
CLEANER OF LOUISVILLE BALLET

JIM HAYNES

JON CARLOFTIS FINE GARDENS

JONATHAN HUFFMAN

JOSEPH FRASNELLI

KORT PHYSICAL THERAPY

KROGER

LESLIE AND JOHN SMART

MARI ORGANIZED

MUTH'S CANDIES

OLMSTED PARKS CONSERVANCY

PARC

PAUL MANNING

SEAN CANTRELL, SON OF ARTIST JIM  
CANTRELL

SIGNARAMA

THE SHERWIN WILLIAMS COMPANY

UNITED DIRECT SOLUTIONS

VIVID IMPACT

WHISKEY ROW HOTEL COLLECTION:  
HOTEL DISTIL

MOXY

ALOFT

HOMEWOOD

WLOU

ZACHARY WARDLAW



MEMORIAL + HONORARY GIFTS

PATTY ANDERSON  
IN HONOR OF CAROLINE ROW

KELLI J. ARCHER  
IN MEMORY OF DORIS ARCHER

MIRIAM BALLERT  
IN MEMORY OF PHILIP PAYNE

SUSAN BRACH  
IN MEMORY OF JOHN BRASCH

LINDA L. BRAUN  
IN MEMORY OF STEVE TOMPKINS

ELLEN T. BROWN  
LINDA AND STUART GOLDBERG  
MARY AND THOMAS HARDIN  
IN HONOR OF HELEN STARR

LEXA DANIELS  
IN MEMORY OF MICHAEL JORDAN

LAURIE DUESING  
IN HONOR OF KATERYNA SELLERS

FRANCES DUMBAUGH  
IN MEMORY OF BARBARA RALPH

PEGGY FOWLER  
LINDA AND STUART GOLDBERG  
PHILLIP VELINOV AND NATALIA ASHIKHMINA  
IN MEMORY OF ALUN JONES

NICK GAGLIO, SR.  
IN HONOR OF ANNA TEGWEDD (MORGAN) GAGLIO

CHERYL AND EUGENE GILCHRIST  
IN HONOR OF HELEN DAIGLE

JULIA K. HALL  
IN HONOR OF LESLIE SMART

CAROL S. HARPER  
IN MEMORY OF SPENCER E. HARPER, JR.

JACQUELINE HAYDEN  
IN HONOR OF SCARLETTE SHAUGHNESSY

JACQUELINE HAYDEN  
IN HONOR HILARY HAYDEN

MR. ALBIN B. HAYES, JR.  
LESLIE AND JOHN SMART  
IN MEMORY OF ANNE FEARS HAYES

CAROL W. HEBEL  
IN MEMORY OF CHARLES W. HEBEL, JR.

BRUCE AND JUDY LOWE  
IN MEMORY OF CHRIS LOWE

CAROL BARR MATTON  
IN HONOR OF ELIZABETH VOYLES

CAROLYN MITCHELL  
IN MEMORY OF MICHAEL JORDAN

GUY AND GENEVIEVE MONTGOMERY  
IN HONOR OF MEREIA CECIL

D. PATTON PELFREY  
IN MEMORY OF DENNIS M. CLARE

D. PATTON PELFREY  
IN MEMORY OF KALLIE LEAH OHLMANN

CAROL PYE  
PHILLIP VELINOV AND NATALIA ASHIKHMINA  
IN HONOR OF BRUCE SIMPSON AND HELEN STARR

STEPHANIE AND HAROLD RANQUIST  
IN MEMORY OF JESSICA WALKER

RITA RECKTENWALD  
IN MEMORY OF MICHAEL CLINTON JORDAN

AMY RITCHIE  
IN HONOR OF SALLY ROTHENBERGER

SARAH AND ROSS SANDERSON  
IN HONOR OF REGAN NICHOLS

SARI AND MARK SHENKMAN  
IN HONOR OF SOPHIE SHENKMAN

LAURA SPAULDING  
IN HONOR OF ASHLEY THURSBY

HELEN STARR  
IN MEMORY OF CLYDE LUTHER

DAVID STIERLE  
IN MEMORY OF BILLIE STIERLE

BRIAN STRUNK  
IN HONOR OF KATERYNA SELLERS AND PETE LAY

DR. DAVID TUCKER AND MRS. LYNDA TUCKER  
IN HONOR OF ISABELLA TUCKER

CAROLE AND LARRY WHITLEDGE  
IN MEMORY OF TERRI S. SMITH

JEFFREY M. BERNHARDT  
IN HONOR OF “LOUISVILLE BALLET AND ALL THE GOOD YOU DO.”

CHARLOTTE LAIL  
IN HONOR OF “THE FABULOUS SUMMER INTENSIVE FACULTY AND STAFF”

To support Louisville Ballet visit [louisvilleballet.org/contribute](http://louisvilleballet.org/contribute)



Amber Wickey and  
Aleksandr Schroeder  
in *A Day at the Derby*.  
Photo by Kateryna Sellers.

BOARD OF DIRECTORS

RALPH DE CHABERT  
*President*

PAMELA THOMPSON  
*Vice President*

JAMES E. HAYNES\*\*  
*Treasurer*

MATTHEW E. HAMEL  
*Secretary*

ERICA BACHELOR

LISA BIDDLE-PUFFER

DR. KIMBERLY BOLAND

TANYA BOWMAN

TIFFANY BRIDGEWATER

MIKELLE BRUZINA\*

LINDY CASEBIER\*

CAROLLE JONES CLAY

TONI CLEM

JANET M. DENUYL

LEE DORSEY

SHERRY FELDPAUSCH

MAYOR CRAIG GREENBERG\*

CHRIS HARTMAN

JOHANNA G. HOWARD

ALAN KAMEI

HARALD UWE KERN\*

KAREN KOSHEWA\*

KATHERINE P. LANGAN

ALLISON O’GRADY

STEVE POE

SHARON POTTER

SHAHARA ROSS\*

ELLEN HIRSCH SHAPIRA

K. SHAVER

LESLIE SMART\*

JOHN STOUGH

WILLIAM STRENCH

CARL THOMAS

JAMES R. VOYLES

DONALD G. WENZEL JR.

MARTHA WERTZ

DONALD WHITFIELD

BUCK WISEMAN

HONORARY STATE ADVISORY COUNCIL

CONGRESSIONAL DISTRICT REPRESENTATION

1ST DISTRICT  
ASHLI WATTS

2ND DISTRICT  
OPEN

3RD DISTRICT  
CHRIS MCGARVEY

4TH DISTRICT  
TARA JOHNSON NOEM

5TH DISTRICT  
DR. MARY ELIZABETH STIVERS

THE HONORABLE SUZIE RAZMUS

6TH DISTRICT  
BEN HAYDON

LEE PURCELL BEST

SHIRLEY DUMESNIL

PEGGY FOWLER

ALEXANDRA GERASSIMIDES, MD

PAULA GRISANTI

MARLENE GRISSOM

SUSAN GRUBBS

BETH KLEIN

NANCY MARTIN

THE LATE PHIL PAYNE

D. PATTON PELFREY

BARBARA SEXTON SMITH

K. SHAVER

LARRY J. STEINBERG

MARGY THOMAS

*\* Ex Officio, \*\* Former President*





HELP US KEEP THE LIGHTS  
**BRIGHT!**

Donate today to support the Artists  
and artistry of Louisville Ballet

